

PRODUCT INFORMATION PACKET

Model No: 143TTFR16020
Catalog No: E2128
1 1/2,3600,TEFC,143T,3/60/575
Totally Enclosed Fan Cooled (TEFC)



Regal and Marathon are trademarks of Regal Beloit Corporation or one of its affiliated companies.
©2018 Regal Beloit Corporation, All Rights Reserved. MC017097E



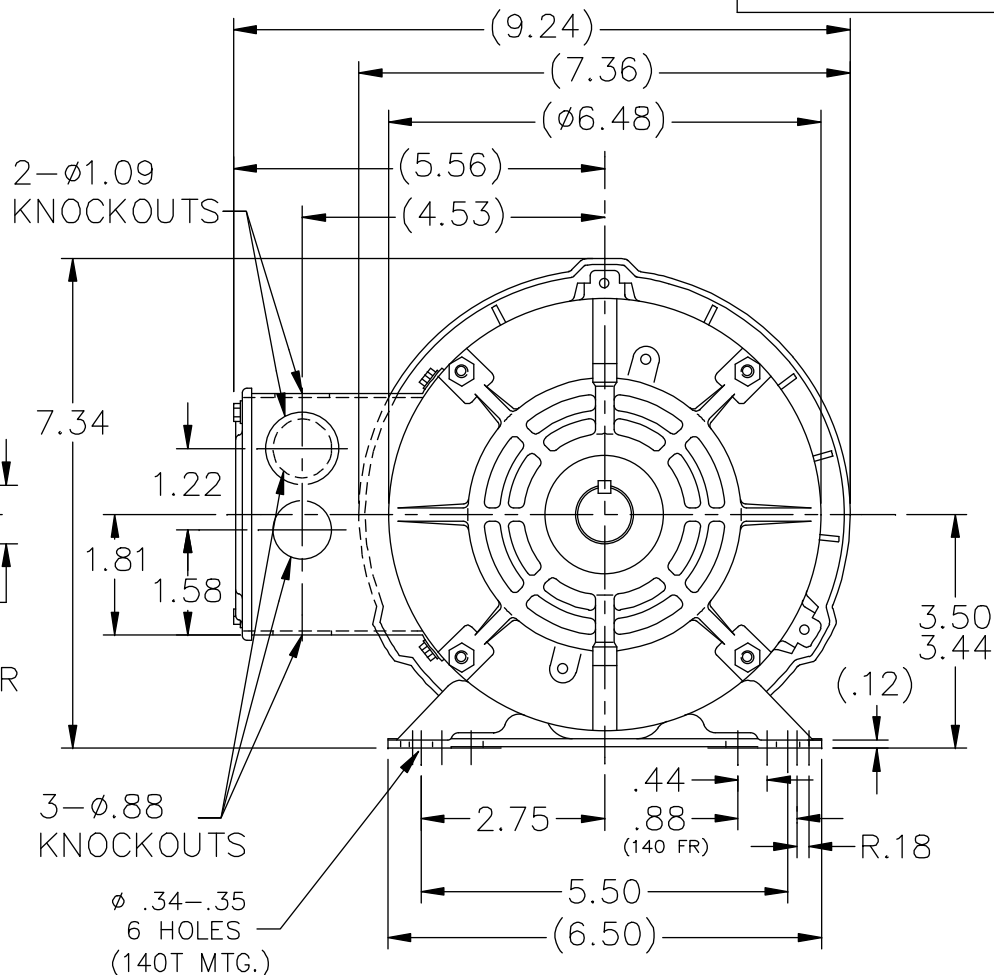
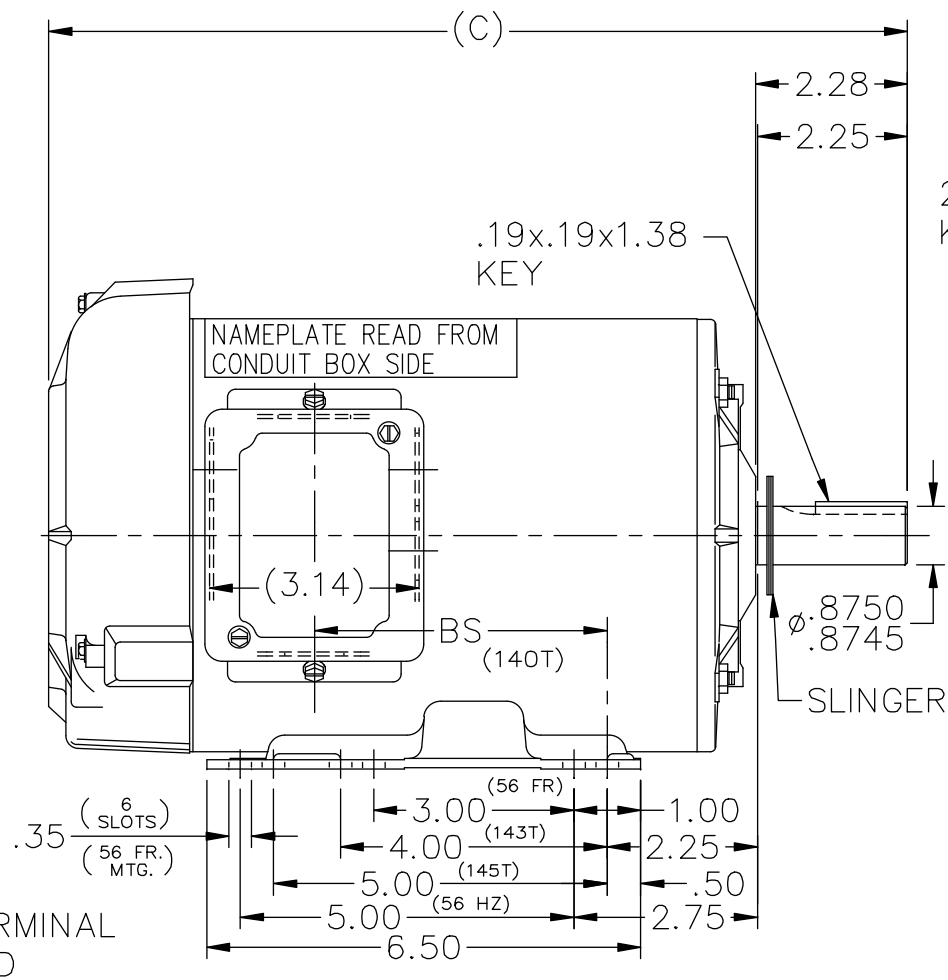
Nameplate Specifications

Output HP	1.50 Hp	Output KW	1.1 kW
Frequency	60 Hz	Voltage	575 V
Current	1.6 A	Speed	3515 rpm
Service Factor	1.15	Phase	3
Efficiency	84 %	Duty	Continuous
Insulation Class	F	Design Code	B
KVA Code	M	Frame	143T
Enclosure	Totally Enclosed Fan Cooled	Overload Protector	No
Ambient Temperature	40 °C	Drive End Bearing Size	6205
Opp Drive End Bearing Size	6203	UL	Recognized
CSA	Y	CE	Y
IP Code	43		

Technical Specifications

Electrical Type	Squirrel Cage Inverter Rated	Starting Method	Line Or Inverter
Poles	2	Rotation	Reversible
Mounting	Rigid base	Motor Orientation	Horizontal
Drive End Bearing	Ball	Opp Drive End Bearing	Ball
Frame Material	Rolled Steel	Shaft Type	T
Overall Length	13.37 in	Frame Length	8.06 in
Shaft Diameter	0.875 in	Shaft Extension	2.28 in
Assembly/Box Mounting	F1 Only		
Outline Drawing	A-100088-806	Connection Diagram	A-EE7300

This is an uncontrolled document once printed or downloaded and is subject to change without notice. Date Created: 07/02/2018



DASH	FR.	C	BS	DASH	FR.	C	BS
706	140T-56HZ	12.37	3.93	856	140T-56HZ	13.87	5.43
756	140T-56HZ	12.87	4.43	906	140T-56HZ	14.37	5.93
806	140T-56HZ	13.37	4.93	956	140T-56HZ	14.87	6.43

NOTE:
1. CONDUIT BOX CAN BE ROTATED IN 180° STEPS

		TOLERANCES UNLESS SPECIFIED		DRAWN DA 08-21-1999	
		DEC.	INCHES	CHK ML 08-26-1991	
		.X	±.1	APPD GK 08-26-1991	
6	REDRAWN IN AUTOCAD	TAT	06-29-2004	ML	.XX ±.03
5	ADDED 'C' DIM. FOR DASH 956	CN	29200-160	TJB	02-15-2000
4	REDRAWN ON CADD	DA	08-21-1991		.XXXX ±.0005
NO.	REVISION	BY & DATE	CHK	ANG	±7'30"
THIS DRAWING IN DESIGN AND DETAIL IS OUR PROPERTY AND MUST NOT BE USED EXCEPT IN CONNECTION WITH OUR WORK ALL RIGHTS OF DESIGN AND INVENTION ARE RESERVED THIS IS AN ELECTRONICALLY GENERATED DOCUMENT - DO NOT SCALE THIS PRINT			RFP	CAD FILE 100088	
			DIST	WP	
			SIZE	DRAWING NO. PAGE OF REV.	
			A	100088 6	



TITLE OUTLINE
140T FR. - 56 HZ - TEFC
MAT'L.
FINISH

**THREE PHASE - SINGLE VOLTAGE
MOTOR - CONDUIT BOX @ 'A'**

**TO REVERSE ROTATION:
INTERCHANGE ANY TWO
LINE LEAD CONNECTIONS.**

TERMINAL BLOCK WHEN SPECIFIED



VIEW OF TERMINAL END

**IF MOTOR HAS
6 LEADS**




A-9806 DECAL

**OPTIONAL CORD
CONNECTION**

- L1 _____ WHITE
- L2 _____ RED
- L3 _____ BLACK

DRAWING REVISION AB	REVISION BY JJB	DATE 06-27-2017
ECO ECO-0125361	APPROVED BY TB	DATE 06-27-2017
ECO DESCRIPTION UPDATED TO CURRENT STANDARDS		
<small>COPYRIGHT REGAL BELOIT AMERICA, INC. ALL RIGHTS RESERVED. PROPRIETARY AND CONFIDENTIAL INFORMATION - THIS DOCUMENT IS THE PROPERTY OF REGAL BELOIT AMERICA, INC. ("OWNER") AND CONTAINS OWNER'S PROPRIETARY INFORMATION. ANY PERSON, CORPORATION OR OTHER FIRM RECEIVING IT IS DEEMED, BY RECEIVING IT, TO AGREE THAT IT, AND/OR ANY PART OF IT, SHALL NOT BE DISCLOSED TO ANY PERSON, CORPORATION OR OTHER ENTITY, DUPLICATED, AND/OR USED, EXCEPT AS EXPRESSLY APPROVED IN WRITING IN ADVANCE BY OWNER. THIS DOCUMENT SHALL BE RETURNED TO OWNER UPON REQUEST. IT MAY BE SUBJECT TO CERTAIN RESTRICTIONS UNDER APPLICABLE EXPORT CONTROL LAWS AND REGULATIONS.</small>		



DRAWN BY DA	 Regal Beloit America, Inc.
DATE 03-26-1993	
APPROVED BY TB	DESCRIPTION CONNECTION DIAGRAM EXTERNAL - SINGLE VOLTAGE - 3Ø MOTOR
DATE 03-26-1993	MATERIAL
REFERENCE	PROCESS/FINISH
THIRD ANGLE PROJECTION	SIZE A
	DRAWING NUMBER EE7300
	SHEET 1 OF 1

Data Sheet

Date: 19-06-2017
 Customer: _____
 Attention: _____
 Submitted by: FAREEDA DUDEKULA



143TFR16020

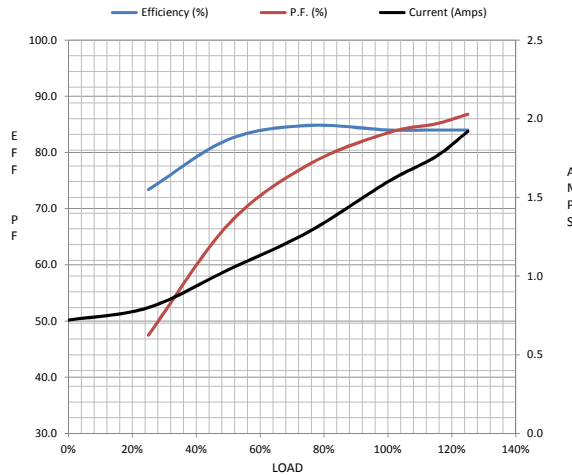
Submittal
 Data @ 575 V

Motor Load Data

Load	0%	25%	50%	75%	100%	115%	125%	LR	
Current (Amps)	0.72	0.80	1.04	1.28	1.60	1.76	1.92	15.5	
Torque (ft-lb)	0.00	0.60	1.10	1.70	2.20	2.60	2.80	7.3	
RPM	3600	3575	3555	3535	3515	3,500	3485	0	
Efficiency (%)		73.4	82.3	84.8	84.0	84.0	84.0		
P.F. (%)	17.0	47.5	67.2	77.8	83.5	85.1	86.8	58.0	

Motor Speed Data

	LR	Pull-Up	BD	Rated	Idle	Information Block	
Speed (RPM)	0	650	2815	3515	3600	HP	1.5
Current (Amps)	15.5	14.9	9.7	1.60	0.72	Sync. RPM	3600
Torque (ft-lb)	7.3	6.1	9.6	2.20	0.00	Frame	143
						Enclosure	TEFC
						Construction	TFR
						Voltage	575 V
						Frequency	60 Hz
						Design	A
						LR Code letter	M
						Service Factor	1.15
						Temp Rise @ FL	38 ° C
						Duty	CONT
						Ambient	40 ° C
						Elevation	1,000 feet
						Rotor/Shaft wk ²	0.05 Lb-Ft ²
						Ref Wdg	ZT2141 R1
						Sound Pressure @ 1M	69 dBA
						VFD Rating	CONSTANT 10:1
						Outline Dwg	A-100088-806
						Conn. Diag	A-EE7300



Information Block				
HP	1.5			
Sync. RPM	3600			
Frame	143			
Enclosure	TEFC			
Construction	TFR			
Voltage	575 V			
Frequency	60 Hz			
Design	A			
LR Code letter	M			
Service Factor	1.15			
Temp Rise @ FL	38 ° C			
Duty	CONT			
Ambient	40 ° C			
Elevation	1,000 feet			
Rotor/Shaft wk ²	0.05 Lb-Ft ²			
Ref Wdg	ZT2141 R1			
Sound Pressure @ 1M	69 dBA			
VFD Rating	CONSTANT 10:1			
Outline Dwg	A-100088-806			
Conn. Diag	A-EE7300			
Additional Specifications:				
0				
365THFS8036				
EQUIV CKT (OHMS / PHASE)				
R1	R2	X1	X2	Xm
2.2170	1.4780	3.6210	3.3260	124.9020

Speed -Torque Curve

